



POWERED BY **GROWTHPOINT**
PROPERTIES



Sustainable Power. Sustainable Savings. Sustainable Growth.

An innovative solution that brings
renewable electricity at *fixed escalations
directly to your office door.



Powering your space to thrive, sustainably

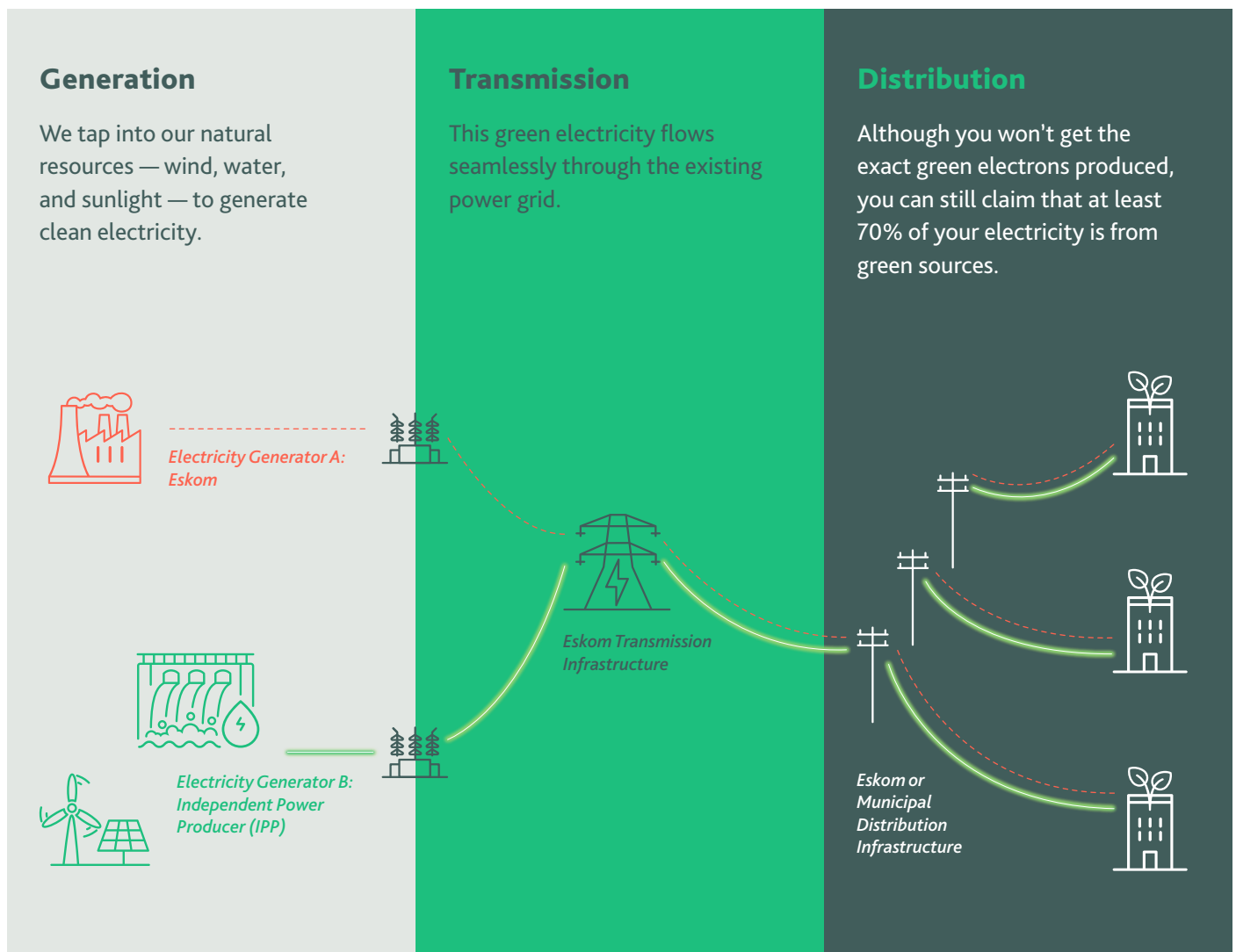
Over the past decade, we've spearheaded the evolution of green building from a novel idea to a cornerstone of our approach.

We prioritise strong Environmental, Social and Governance (ESG) strategies and results, and we understand why it's crucial for our clients to do the same.

That's why we've embarked on an exciting journey towards renewable energy through our recent Power Purchase Agreement with Etana Energy, securing an impressive 195 GWh of clean electricity annually. And, while wheeling does not directly mitigate the impact of load-shedding on your premises, e-CO₂ makes it easy for your business to achieve its ESG goals.

Here's how it works:

Wheeling is a process where electricity is bought and sold between private parties, using the existing grid to transport power. It creates greater access to affordable renewable energy and contributes to resolving the country's energy crisis.



Clean energy at work



Stay Longer, Save More

We offer fixed escalation on the variable component of the electricity price, ensuring long-term cost savings. The longer your lease, the more predictable and potentially lower your electricity costs will be. To learn more about these savings, [watch a quick video here](#).

Align Power with Purpose

By opting for e-CO₂, you contribute significantly to your ESG goals – reflecting your commitment to sustainability and responsible business practices.



Certified Emission Reduction Certificate

Access to certified emission reduction certificate annually. This certificate can be used in your ESG reporting and showcase your dedication to green electricity.

Here's how you get e-CO₂ in your building*

e-CO₂ Connect

70% Minimum Clean Electricity

Opt-in and guarantee at least 70% of your power from renewable sources for maximum saving potential.

e-CO₂ Ignite

100% Maximum Clean Electricity

Want to take your sustainability goals even further? Depending on the availability of additional capacity, you can power your business with 100% clean electricity. However, a renewable availability charge would apply.

* e-CO₂ is currently available only in specific jurisdictions and to select buildings within our portfolio. Currently available in select buildings in Sandton, you can find the full list in our T&Cs.

Contact us



Leasing Consultant Dylan Newton

DNewton@growthpoint.co.za
+27 87 353 4704



Leasing Consultant Hannah Nesbitt

HNesbitt@growthpoint.co.za
+27 87 353 4701



Asset Manager Johann Hammann

JHammann@growthpoint.co.za
+27 11 944 6238

e-CO₂ launching in Sandton



For general enquires, please call:

Johannesburg +27 11 944 6583

FAQs

By wheeling renewable energy, your business can make a substantial impact on reducing its environmental footprint.

How will renewable energy wheeling reduce my business' emissions?

This approach can significantly cut down your business's scope 2 emissions, and is often the most effective step towards achieving carbon neutrality.

Businesses produce three types of greenhouse gas emissions:

SCOPE 1



Direct emissions from sources owned or controlled by the company i.e company vehicles burning fuel.

SCOPE 2



Indirect emissions from the electricity the company consumes. These emissions can be significantly reduced by wheeling renewable energy.

SCOPE 3



All other indirect emissions related to the company's operations, including those from suppliers, customers, and employee commutes.

Why does wheeling of renewable energy not prevent my business from being affected by load shedding?

While wheeling electricity alone won't immediately eliminate load shedding, increasing renewable energy production will gradually stabilise the national grid, reducing load shedding in the future. You won't notice any changes in how your power is delivered, as it will still come through the same Eskom network.

When will I start receiving renewable energy from e-CO₂?

Through our PPA with Etana Energy, Growthpoint has exclusive rights to purchase all of the roughly 30GWh that will be generated annually by a 5MW hydroelectric power plant situated in the Lesotho Highlands Water Scheme, expected to be operational from 1 July 2025. Following this, the wind and solar production from Etana's portfolio will be added to the grid.

How is my electricity consumption tracked?

We will install a smart meter at your premises to track your consumption correctly!

